

LES MYSTÈRES DE MADAGASCAR

Collection Décors & Panoramiques



Story behind the collection

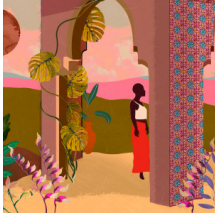
Each panoramic or decor immerses you in a fairytale or intriguing story. Not only the pattern appeals to the imagination, the material used is also surprising. From velvety soft silk looks and bouclé fabrics to sophisticated linen effects.

Technical specifications

Reference	<u>97531</u> • Dune
Product category	Couture
Composition	Textile wallcovering on non-woven backing
Description	Panoramic in coarse linen effect that reflects the great diversity of Madagascar
Dimensions	Panoramic of 480 cm x 300 cm = 14,40 m ² (188.98" x 118.11" = 155 sq.ft.)
Remark	The pattern is repeatable, allowing several panoramics to be joined together
Adhesive	Arte Clearpro or a good quality dispersion adhesive
How to paste	Paste the wall
Light resistance	Good lightfastness
How to remove	Strippable
Fire retardant EU	B-s1, d0
Fire retardant US	Class A
Maintenance	Spongeable during hanging (dab away damp glue)



Colourways (2)

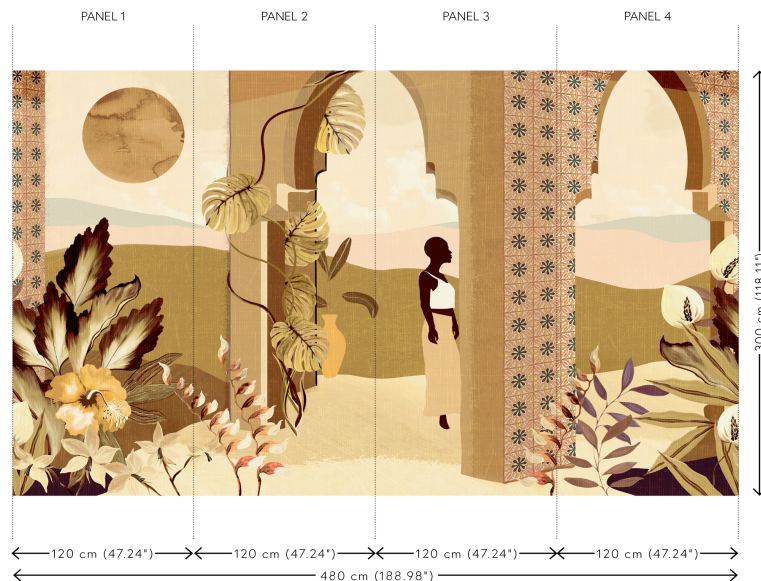


97530



97531

View



More info? [Click here](#)

Order samples, calculate quantities, view instructional videos, download technical information and more:
www.arte-international.com



ARTE®

wallcoverings for the ultimate in refinement