



TOILE DE TIBET

Collection Décors & Panoramiques

Story behind the collection

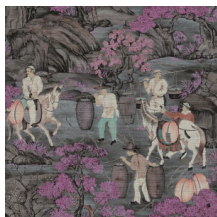
Each panoramic or decor immerses you in a fairy-tale or intriguing story. Not only the pattern appeals to the imagination, the material used is also surprising. From velvety soft silk looks and bouclé fabrics to sophisticated linen effects.

Technical specifications

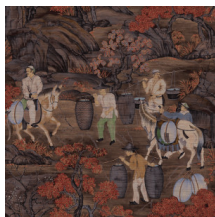
Reference	<u>97690</u> • Pink Blossom
Product category	Couture
Composition	Textile wallcovering on non-woven backing
Description	Decor of a colourful agricultural scene from Tibet, printed on horizontally woven paper look strips
Dimensions	Width 120 cm (47.24"), sold by the linear metre/yard
Pattern repeat	Drop match 120/60 cm (47.24"/23.62")
Adhesive	Arte Clearpro or a good quality dispersion adhesive
How to paste	Paste the wall
Light resistance	Good lightfastness
How to remove	Strippable
Fire retardant EU	B-s1, d0
Fire retardant US	Class A
Maintenance	Spongeable during hanging (dab away damp glue)



Colourways (3)



97690



97691



97692

View



More info? [Click here](#)

Order samples, calculate quantities, view instructional videos, download technical information and more:
www.arte-international.com



ARTE®

wallcoverings for the ultimate in refinement