

# BUCOLIQUE

Collection Les Tapisseries



## Story behind the collection

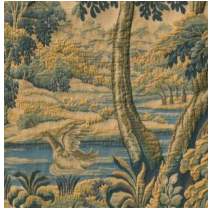
From the 14th to the 18th century, the interiors of castles and manor houses were adorned with magnificent tapestries. These hand-woven artworks depicted not only mythical scenes but also everyday life among the traditional upper classes. They brought warmth and colour to grand rooms and often served as captivating conversation pieces for guests.

## Technical specifications

Reference	<u>97850</u> • Forest Green
Product category	Couture
Composition	Textile wallcovering on non-woven backing
Description	An idyllic scene on a voluminous textile, designed after a 17th-century tapestry
Dimensions	Panoramic of 480 cm x 300 cm = 14.4 m <sup>2</sup> (188.98" x 118.11" = 155 sq. ft.)
Pattern repeat	Straight match 300 cm (118.11")
Remark	The pattern is repeatable, allowing several panoramics to be joined together.
Adhesive	Arte Clearpro or a good quality dispersion adhesive
How to paste	Paste the wall
Light resistance	Good lightfastness
How to remove	Strippable
Fire rating EU	B-s1, d0
Fire rating US	Class A
Maintenance	Spongeable during hanging (dab away damp glue)



## Colourways (2)



97850



97851

## View



More info? [Click here](#)

Order samples, calculate quantities, view instructional videos, download technical information and more:  
[www.arte-international.com](http://www.arte-international.com)



ARTE®

wallcoverings for the ultimate in refinement