



DODO PAVONE

Collection Moooi Wallcovering Extinct
Animals

Story behind the collection

The Extinct Animals wallcoverings are inspired by Moooi's Museum of Extinct Animals. With the Museum of Extinct Animals, Moooi celebrates nature's diversity, stimulating to stretch the limits of imagination. Highlighting that the most invaluable treasure from past and present expeditions is the unexpected diversity of beauty, in all its forms.

Technical specifications

| | |
|-------------------|---|
| Reference | <u>MO2095</u> • Powdery Blue |
| Product category | Couture |
| Composition | 3D textile wallcovering on non-woven backing |
| Description | Wallcovering with a soft suede look, inspired by the Dodo Pavone's natural outfit |
| Dimensions | Width 124 cm (48.82"), sold by the linear metre/yard |
| Pattern repeat | Straight match 58.5 cm (23.03") |
| Remark | Stain and water repellent, positive acoustic effect |
| Adhesive | Arte Clearpro or a good quality dispersion adhesive |
| How to paste | Paste the wall |
| Light resistance | Good lightfastness |
| How to remove | Strippable |
| Fire retardant EU | C-s2, d0 |
| Fire retardant US | Class A |
| Maintenance | Spongeable during hanging (dab away damp glue) |



Colourways (6)



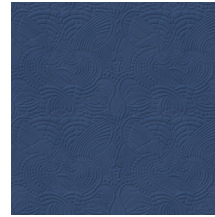
MO2091



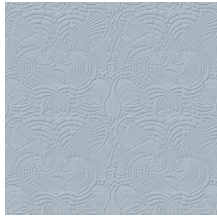
MO2092



MO2093



MO2094



MO2095



MO2096

View



More info? [Click here](#)

Order samples, calculate quantities, view instructional videos, download technical information and more:
www.arte-international.com



ARTE®

wallcoverings for the ultimate in refinement