



SHOJI BLOSSOM

Collection Moooi Wallcovering Tokyo
Blue

Story behind the collection

The distinct features and surroundings of the newest addition to the Museum of Extinct Animals, the Indigo Macaque, inspired a new collection within the Extinct Animals Wallcovering Collection; Moooi Tokyo Blue.

Technical specifications

Reference	<u>MO3030</u> • Denim
Product category	Couture
Composition	3D textile wallcovering on non-woven backing
Description	3D wallcovering made from denim (MO3030) and felted wool (MO3031-MO3032). Symbolic cherry blossoms and straight lines resembling the minimalistic feel of Japanese Shoji screens
Dimensions	Width 119 cm (46.85"), sold by the linear metre/yard
Pattern repeat	Drop match 115/57.5 cm (45.28"/22.64")
Adhesive	Arte Clearpro or a good quality dispersion adhesive
How to paste	Paste the wall
Light resistance	Good lightfastness
How to remove	Strippable
Fire retardant EU	C-s1, d0
Maintenance	Spongeable during hanging (dab away damp glue)



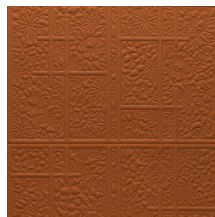
Colourways (3)



MO3030

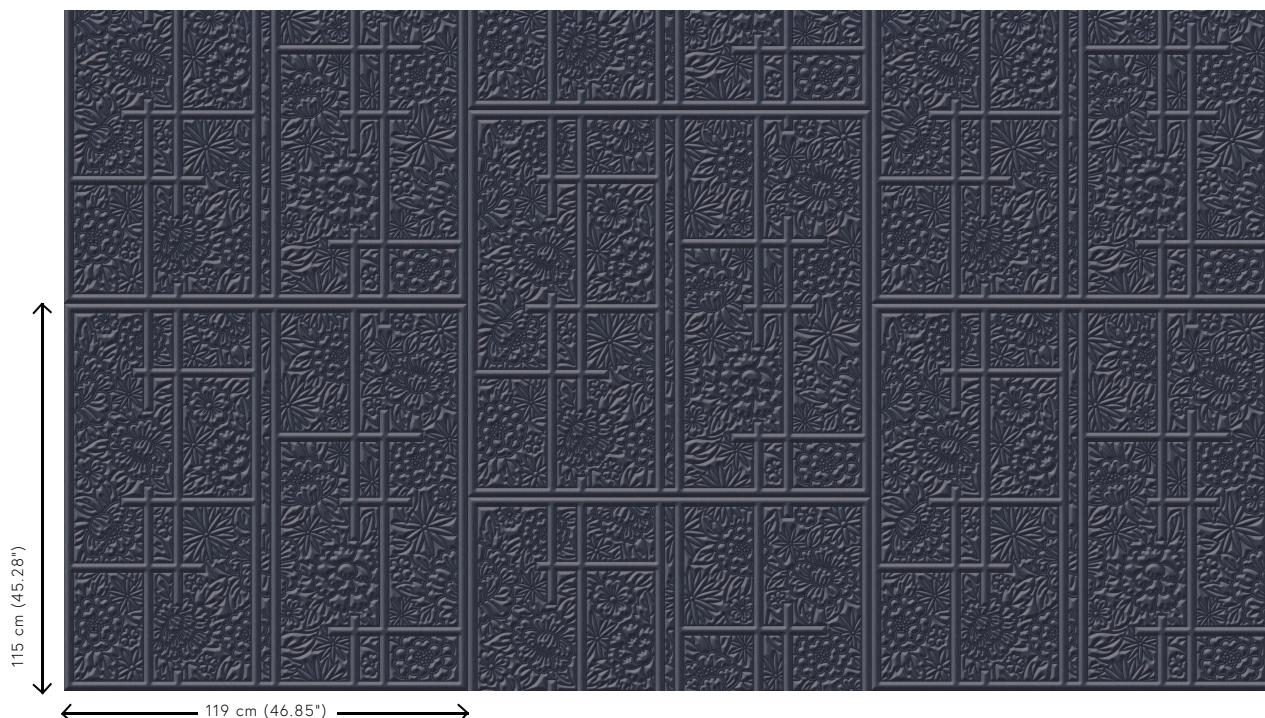


MO3031



MO3032

View



More info? [Click here](#)

Order samples, calculate quantities, view instructional videos, download technical information and more:
www.arte-international.com



ARTE®

wallcoverings for the ultimate in refinement