



# SHOJI BLOSSOM

Collection Moooi Wallcovering Tokyo  
Blue

## Story behind the collection

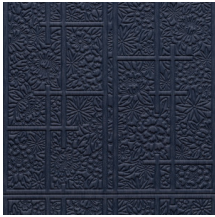
The distinct features and surroundings of the newest addition to the Museum of Extinct Animals, the Indigo Macaque, inspired a new collection within the Extinct Animals Wallcovering Collection; Moooi Tokyo Blue.

## Technical specifications

Reference	<u>MO3032</u> • Copper
Product category	Couture
Composition	3D textile wallcovering on non-woven backing
Description	3D wallcovering made from denim (MO3030) and felted wool (MO3031-MO3032). Symbolic cherry blossoms and straight lines resembling the minimalistic feel of Japanese Shoji screens
Dimensions	Width 119 cm (46.85"), sold by the linear metre/yard
Pattern repeat	Drop match 115/57.5 cm (45.28"/22.64")
Adhesive	Arte Clearpro or a good quality dispersion adhesive
How to paste	Paste the wall
Light resistance	Good lightfastness
How to remove	Strippable
Fire retardant EU	C-s2, d0
Maintenance	Spongeable during hanging (dab away damp glue)



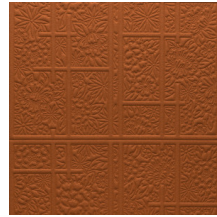
### Colourways (3)



MO3030

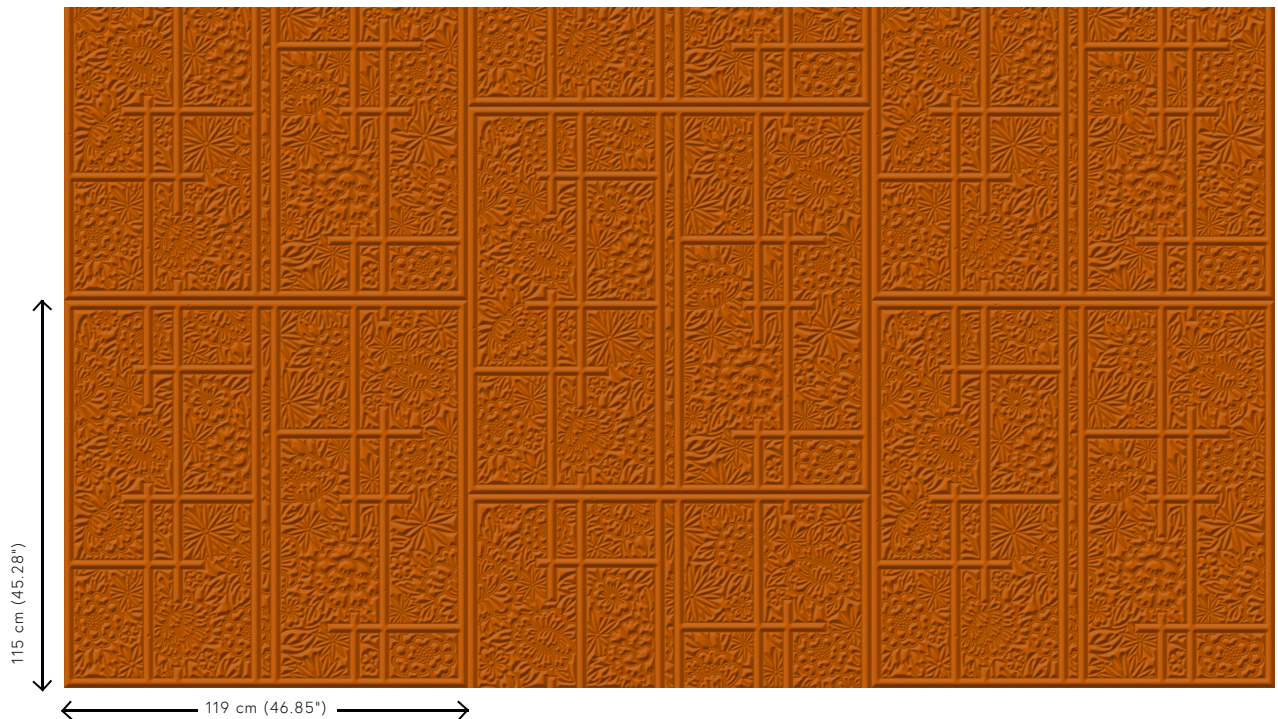


MO3031



MO3032

### View



More info? [Click here](#)

Order samples, calculate quantities, view instructional videos, download technical information and more:  
[www.arte-international.com](http://www.arte-international.com)



ARTE®

wallcoverings for the ultimate in refinement