



DAMAS

Colección Flamant Suite V - Mystic Impressions

Historia de la colección

For this collection we immersed ourselves in archives and antique books in search of 19th century floral patterns. Flower and leaf patterns were immensely popular back then and they were often used to decorate everyday objects, especially in the higher social circles. This collection is based on two centuries-old patterns which have each been given a radically new reinterpretation. The first pattern is an informally elegant interplay of flowers and leaves, while the second pattern is somewhat statelier. Both prints seem to have been stippled onto a linen structure and combine perfectly with the plain Lin.

Especificaciones técnicas

| | |
|-------------------------|---|
| Referencia | <u>59101</u> |
| Categoría de producto | Refined |
| Composición | Papel pintado sobre base no tejida |
| Dimensiones | Rollos de 8,50 x 0,70 m = 6 m ² |
| Case | Case recto 64 cm |
| Pegamento | Arte Clearpro o una cola de dispersión de buena calidad |
| Cómo encolar | Encolar la pared |
| Resistencia a la luz | Buena resistencia a la luz |
| Cómo retirar | Arrancable en seco |
| Certificado ignífugo EU | B-s1, d0 |
| Certificado ignífugo US | Class A |
| Mantenimiento | Súper lavable |
| IMO Certified | |



0493/22



Colores (6)



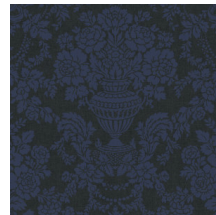
59100



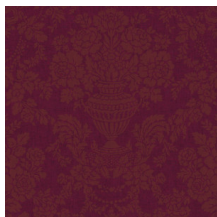
59101



59102



59103



59104



59105

Más información? [Haga clic aquí](#)

Solicita muestras, calcule cantidades, vea videos de instrucciones, descargue información técnica y más:
www.arte-international.com



ARTE®

wallcoverings for the ultimate in refinement