

LIN

Colección Flamant Suite V - Mystic Impressions



Historia de la colección

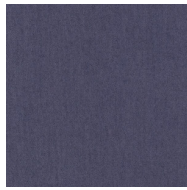
For this collection we immersed ourselves in archives and antique books in search of 19th century floral patterns. Flower and leaf patterns were immensely popular back then and they were often used to decorate everyday objects, especially in the higher social circles. This collection is based on two centuries-old patterns which have each been given a radically new reinterpretation. The first pattern is an informally elegant interplay of flowers and leaves, while the second pattern is somewhat statelier. Both prints seem to have been stippled onto a linen structure and combine perfectly with the plain Lin.

Especificaciones técnicas

Referencia	<u>59300</u> • Nocturne
Categoría de producto	Refined
Composición	Papel pintado sobre base no tejida
Dimensiones	Rollos de 8,50 x 0,70 m = 6 m ²
Case	Case libre 0 cm
Pegamento	Arte Clearpro o una cola de dispersión de buena calidad
Cómo encolar	Encolar la pared
Resistencia a la luz	Buena resistencia a la luz
Cómo retirar	Arrancable en seco
Certificado ignífugo EU	B-s1, d0
Certificado ignífugo US	Class A
Mantenimiento	Súper lavable
IMO Certified	



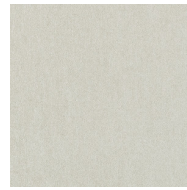
Colores (20)



59300



59301



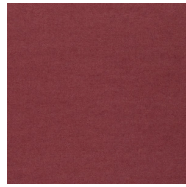
59302



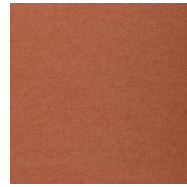
59303



59304



59306



59307



59308



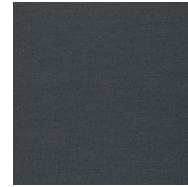
59310



59311



59312



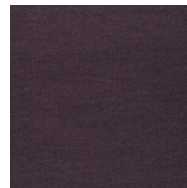
59313



59314



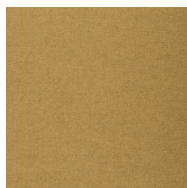
59315



59317



59318



59319



59320



59321



59322

Más información? [Haga clic aquí](#)

Solicita muestras, calcule cantidades, vea videos de instrucciones, descargue información técnica y más:
www.arte-international.com



ARTE®

wallcoverings for the ultimate in refinement